

Bootload Recovery Tool

For training video: <https://www.youtube.com/watch?v=ThOjoYUoFq8>

1.	When to use a Bootable microSD card?	1
2.	XL Series Recovery Procedure.....	1
2a.	You must create a recovery disk	1
2b.	Recover the Firmware	4
3.	Technical Support.....	5

1. When to use a Bootable microSD card?

1. If a firmware update is unsuccessful on an **XL series** (excluding XLE/XLT models) or **X5 model**, recovery is needed.
2. When applying a firmware update to an RCC controller, which does not feature a built-in user interface.

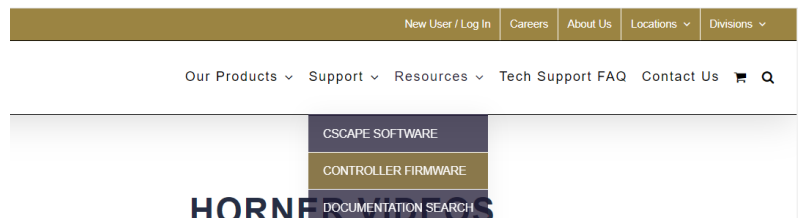
2. XL Series Recovery Procedure

2a. You must create a recovery disk

Step 1: Acquire a microSD card that is 32GB or smaller.

Step 2: Download the OCS Bootload Creator from the Horner Website via the Controller Firmware page:

Horner Home page → Support (drop-down) → Controller Firmware → Firmware Resources/Bootload Creator Tool



FIRMWARE RESOURCES

Resource	Version	Controllers	Link to Download
OCS Bootload Creator Tool	Firmware 15.54	XL Series and RCC Series	Download

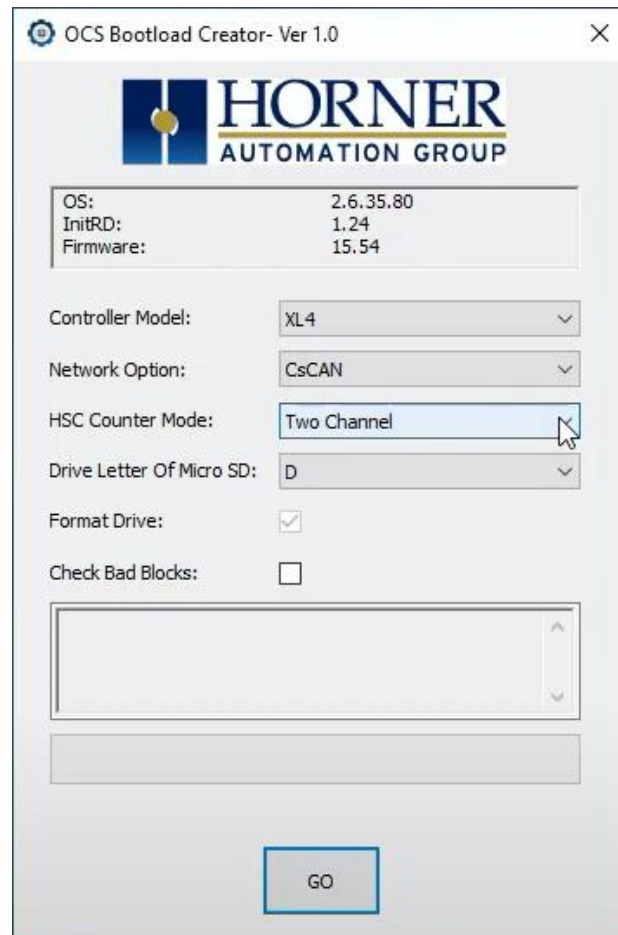
NOTE: Must be logged into the Horner website to download. To create an account, return to the homepage.

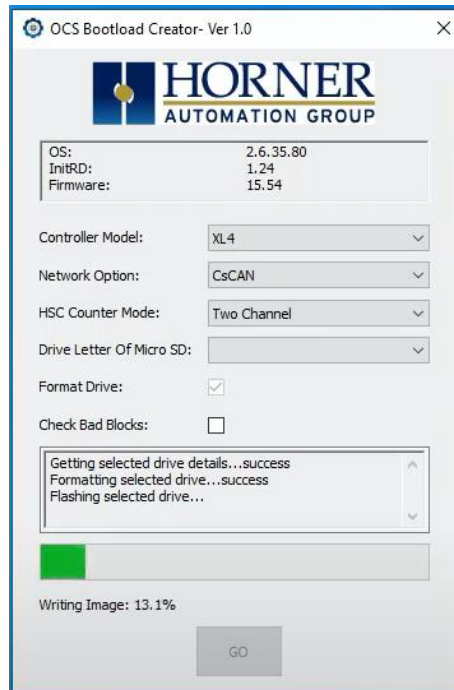
Step 3: Install the Utility on your Windows PC (Windows 7, 10, or 11).

Step 4: Insert the microSD card on the PC.

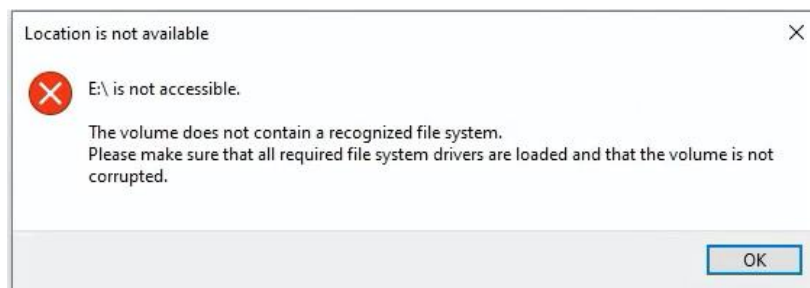
Step 5: Run the OCS Bootload Creator utility selecting:

- Controller Model
- HSC Counter Mode
- microSD Drive Letter

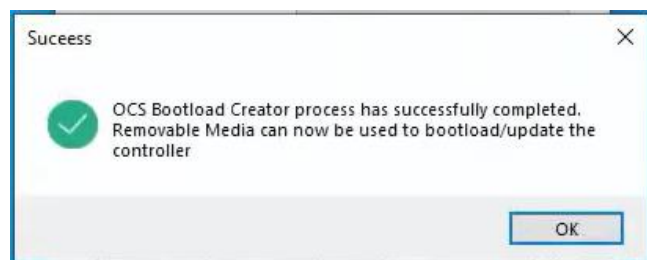


Step 6: Select GO

NOTE: After the process is finished, you may see a Windows error like the following. This is normal - Windows is flagging an unrecognizable partition after the bootload disk has been created.



Select **OK**.



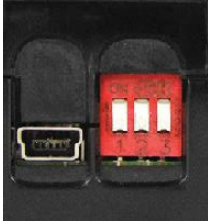
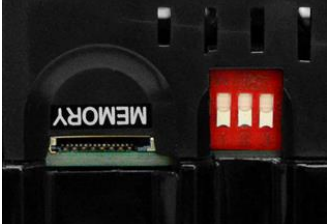


Select **OK**.


Step 7: Eject the drive.

2b. Recover the Firmware

Step 1: Install the bootable drive on the OCS.

Step 2: Firmware Dip Switch and Firmware Push Button

Firmware Dip Switch			
X5	XL4	XL7 - on the back	Flip #3 Dip Switch on the controller then apply power.
			

Firmware Push Button	
<p>Firmware Push Button: For the RCC series, EXL6, EXLW and EXL10 press the push button while applying power. (The push button near the USB port that is used for programming.)</p>	
	

Step 3: The OCS will boot and prompt the user to install the Bootloader in the local FLASH memory of the OCS.

Step 4. Once that process is completed:

- Flip the dip switch back to its default position (if applicable)
- Power Cycle

Step 5: The unit should boot as normal with expected errors (no program, battery) and the firmware is fully recovered.

3. Technical Support

North America:

Tel: 1-877-665-5666

Fax: 317 639-4279

Web: <https://hornerautomation.com>

Email: techsppt@heapg.com

Europe:

Tel: +353-21-4321266

Fax: +353-21-4321826

Web: <https://hornerautomation.eu>

Email: technical.support@horner-apg.com