

- NOTES
1. THE DIMENSIONS OF THIS DRAWING ARE CONTROLLED BY THE INVENTOR MODEL IF AVAILABLE. THE MODEL TAKES PRECEDENCE OVER THIS DRAWING.


2. ALL DIMENSIONS ARE IN in [mm] UNLESS OTHERWISE NOTED.

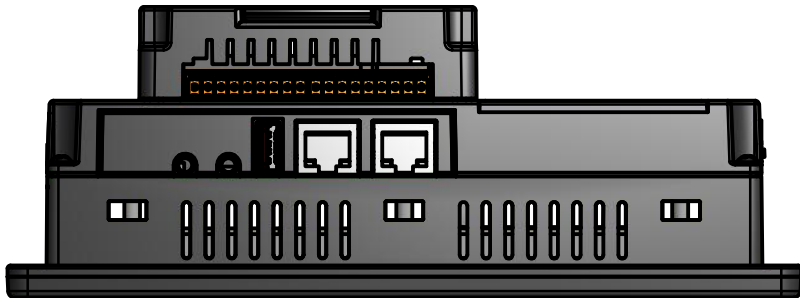
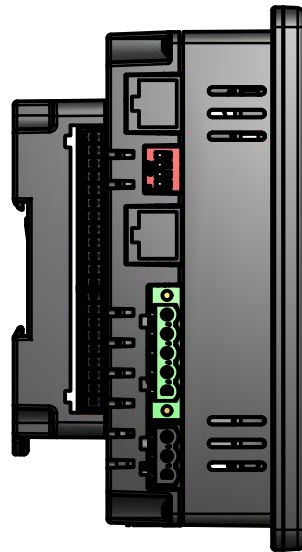
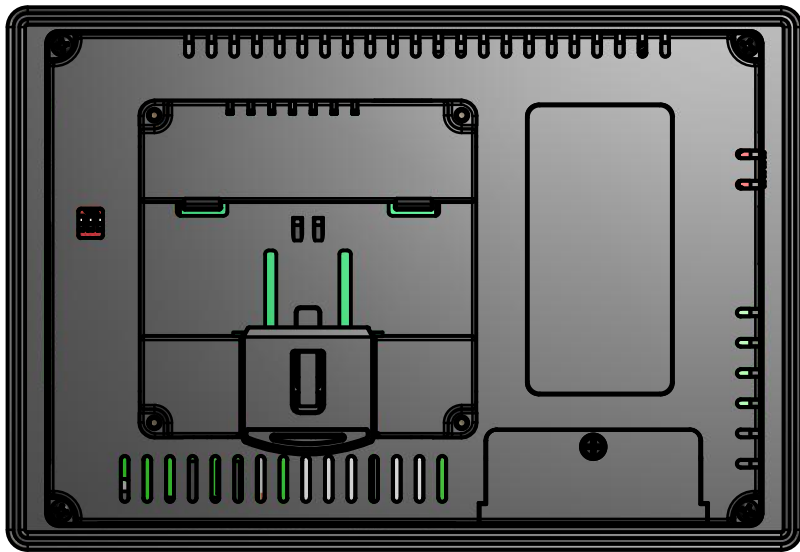
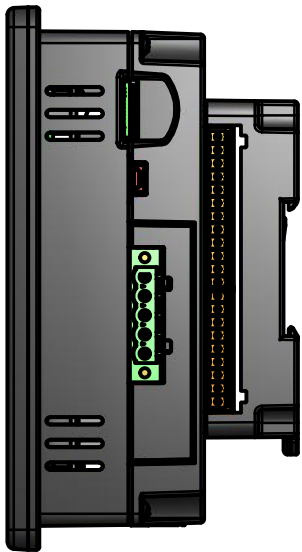
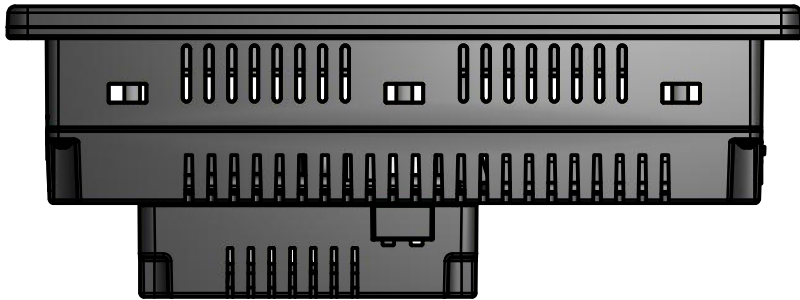
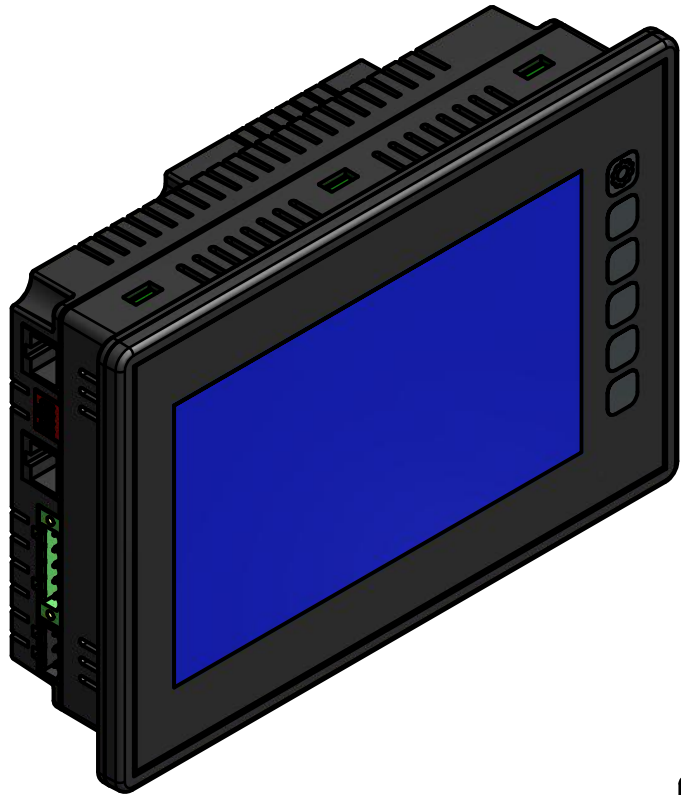
3. TOLERANCES: STANDARD COMMERCIAL TOLERANCE UNLESS OTHERWISE SPECIFIED.


4. MATERIAL: MAKROLON 6265 OR APPROVED EQUIVALENT

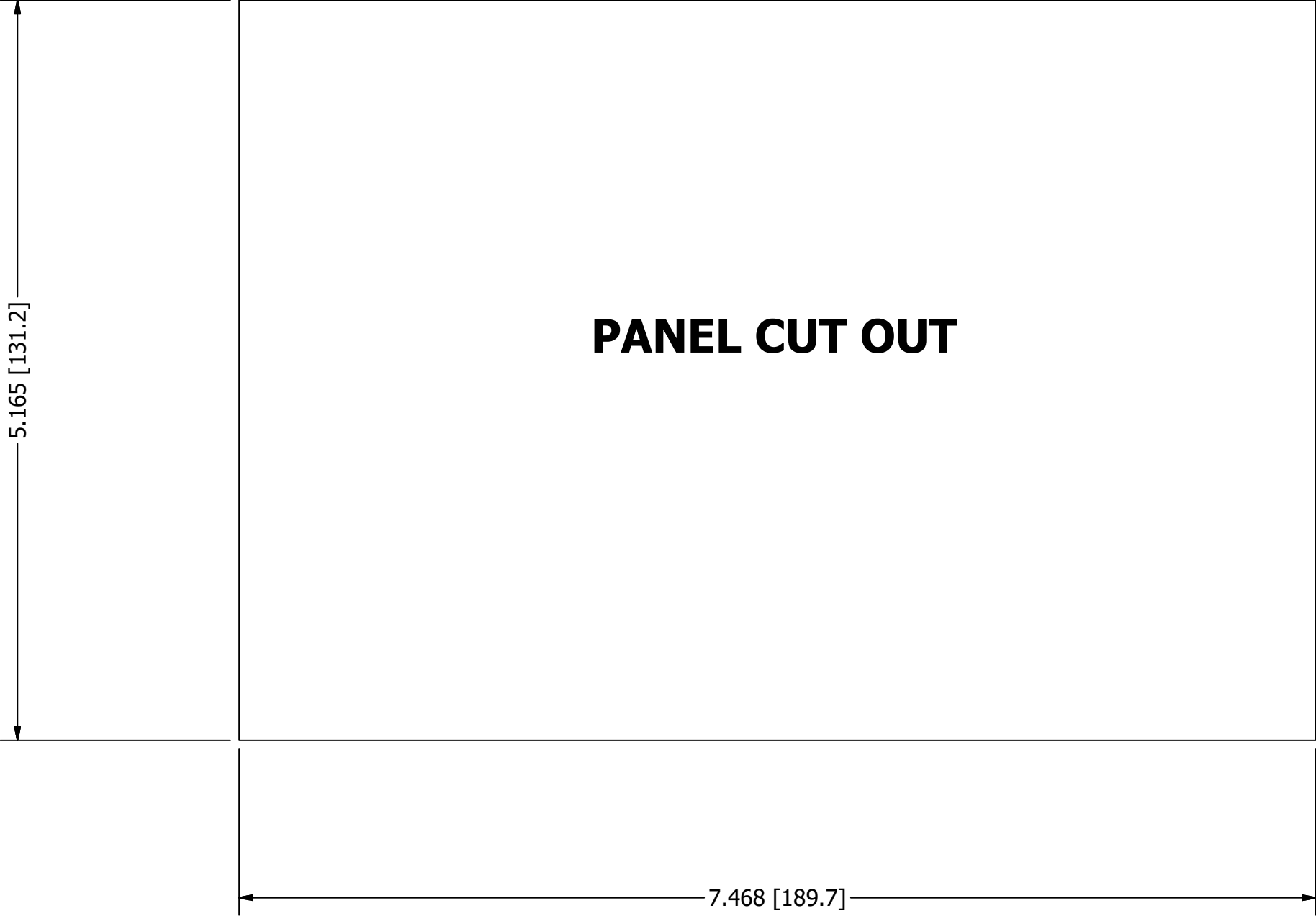
5. FINISH: NO NOTICEABLE DEFECTS AT 3FT (90° ANGLE UNDER NATURAL LIGHTING)


REVISION HISTORY			
REV	DESCRIPTION	AUTHOR	DATE
0.0	INITIAL RELEASE	ETC	06/17/2024

PRODUCTS USED ON		Canvas 7D			
DESIGNED BY:	BR	06/17/2024		<div><div> HORNER APG</div><div>59 S. STATE AVE. Indianapolis, Indiana 46201 PH: (317) 916-4274 FX: (317) 916-4280</div></div>	
DRAWN BY:	ETC	06/17/2024			
CHECKED BY:	JB	06/17/2024			
FILE NAME:					
HE_CV-070D-06_2D Mechanical.dwg					
TITLE OF DRAWING:					
HE_CV-070D-06					
SHEET:	1	SCALE:	SIZE:	REVISION:	DRAWING NUMBER:
OF	3	1:2	B	0.0	HE_CV-070D-06



PRODUCTS USED ON		Canvas 7D			
DESIGNED BY:	BR	06/17/2024	 59 S. STATE AVE. Indianapolis, Indiana 46201 PH: (317) 916-4274 FX: (317) 916-4280		
DRAWN BY:	ETC	06/17/2024			
CHECKED BY:	JB	06/17/2024			
FILE NAME: HE_CV-070D-06_2D Mechanical.dwg					
TITLE OF DRAWING: <div>HE-CV-070D-06</div>					
SHEET:	2	SCALE:	SIZE:	REVISION:	DRAWING NUMBER:
OF	3	1:2	B	0.0	HE-CV-070D-06



PRODUCTS USED ON		Canvas 7D			
DESIGNED BY:	BR	06/17/2024		 59 S. STATE AVE. Indianapolis, Indiana 46201 PH: (317) 916-4274 FX: (317) 916-4280	
DRAWN BY:	ETC	06/17/2024			
CHECKED BY:	JB	06/17/2024			
FILE NAME:			HE_CV-070D-06_2D Mechanical.dwg		
TITLE OF DRAWING:					
HE-CV-070D-06					
SHEET:	3	SCALE:	SIZE:	REVISION:	DRAWING NUMBER:
OF	3	1:1	B	0.0	HE-CV-070D-06