
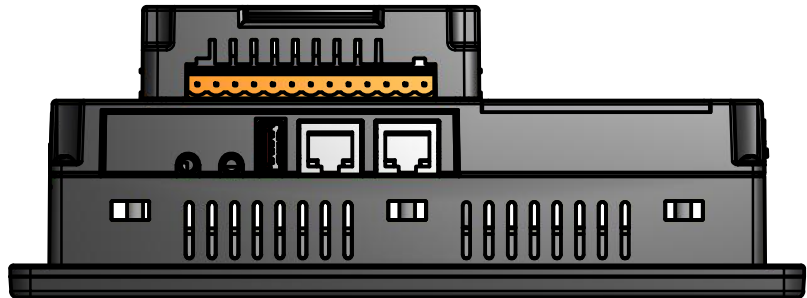
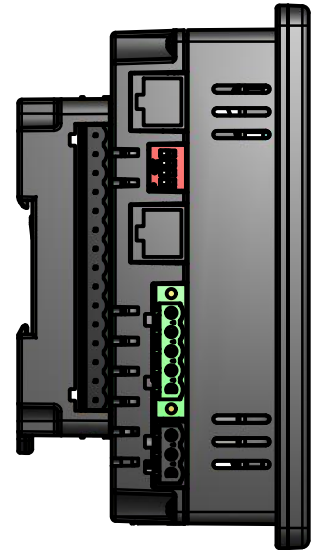
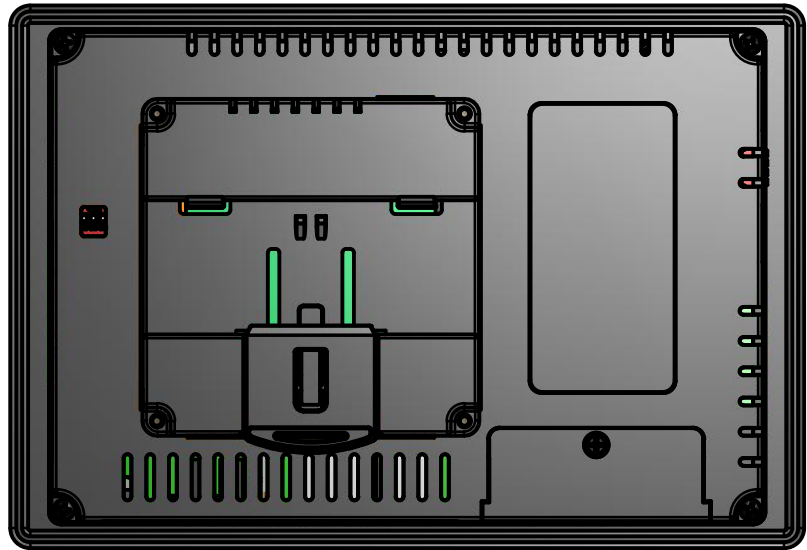
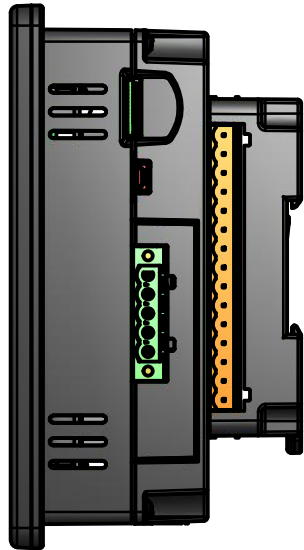
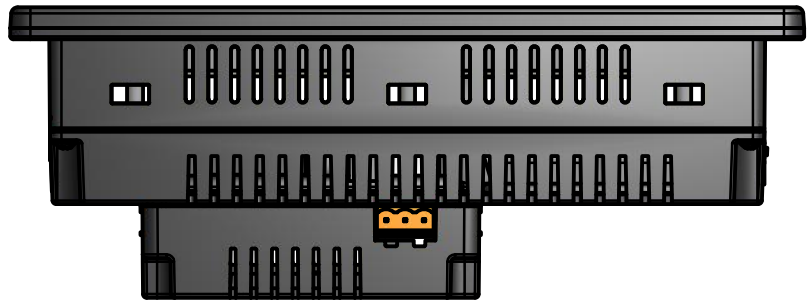
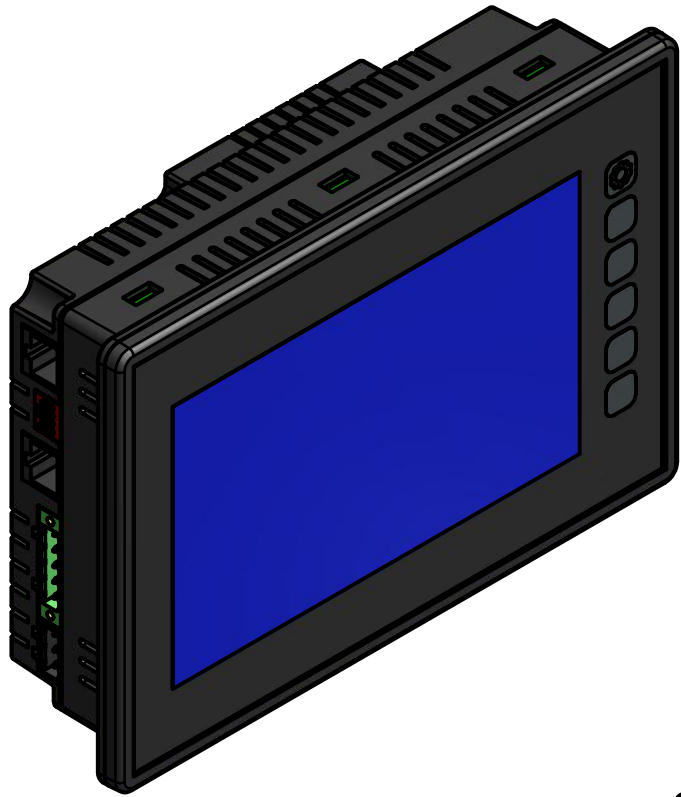



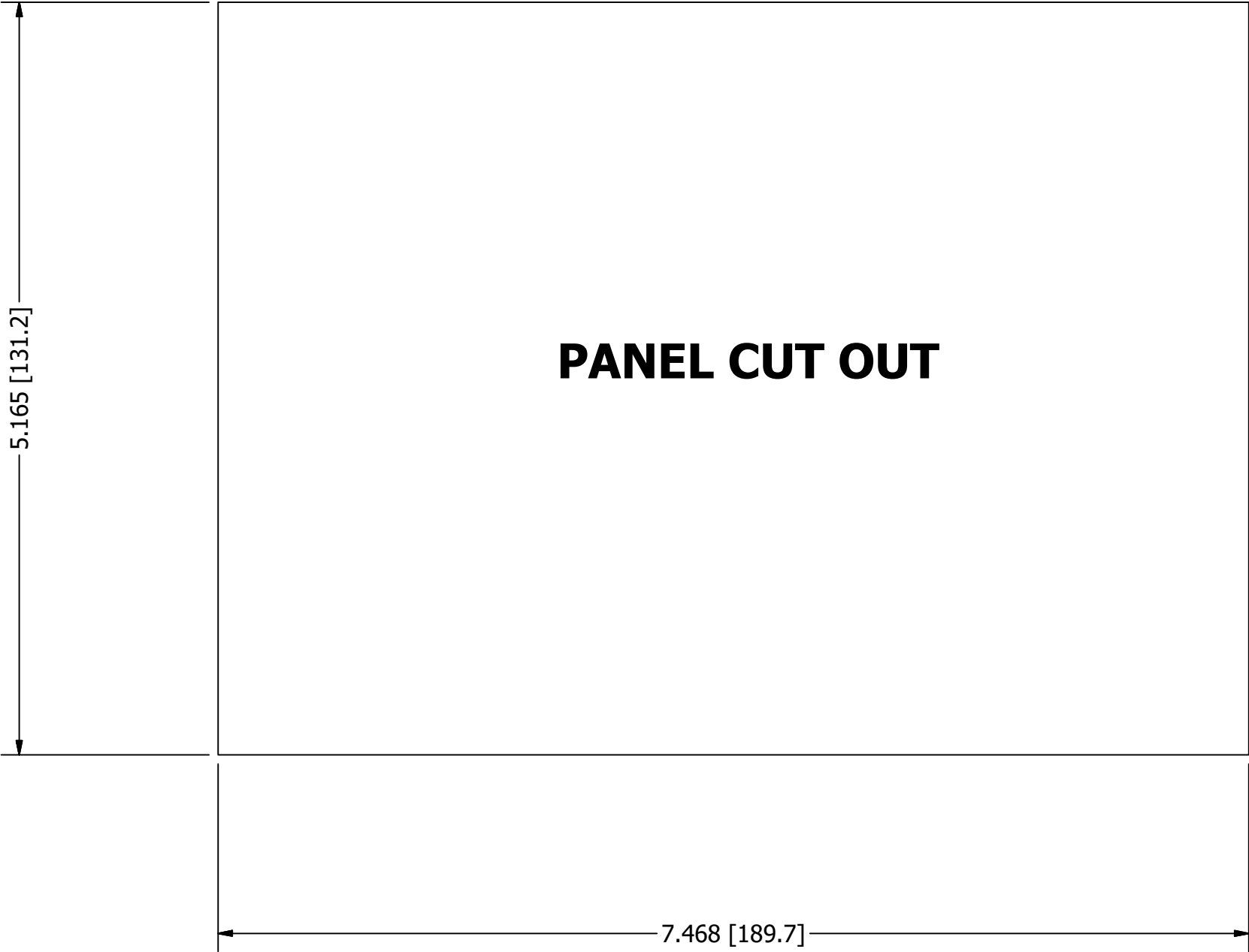
- NOTES
1. THE DIMENSIONS OF THIS DRAWING ARE CONTROLLED BY THE INVENTOR MODEL IF AVAILABLE. THE MODEL TAKES PRECEDENCE OVER THIS DRAWING.
 2. ALL DIMENSIONS ARE IN in [mm] UNLESS OTHERWISE NOTED.
 3. TOLERANCES: STANDARD COMMERCIAL TOLERANCE UNLESS OTHERWISE SPECIFIED.
 4. MATERIAL: MAKROLON 6265 OR APPROVED EQUIVALENT
 5. FINISH: NO NOTICEABLE DEFECTS AT 3FT (90° ANGLE UNDER NATURAL LIGHTING)


REVISION HISTORY			
REV	DESCRIPTION	AUTHOR	DATE
0.0	INITIAL RELEASE	ETC	06/17/2024

PRODUCTS USED ON		Canvas 7D		
DESIGNED BY:	BR	06/17/2024	 59 S. STATE AVE. Indianapolis, Indiana 46201 PH: (317) 916-4274 FX: (317) 916-4280	
DRAWN BY:	ETC	06/17/2024		
CHECKED BY:	JB	06/17/2024		
FILE NAME:			HE-CV-070D-04_2D Mechanical.dwg	
TITLE OF DRAWING:			HE-CV-070D-04	
SHEET:	1	SCALE:	SIZE:	REVISION:
OF	3	1:2	B	0.0
DRAWING NUMBER:			HE-CV-070D-04	



PRODUCTS USED ON		Canvas 7D			
DESIGNED BY:	BR	06/17/2024	 <div>HORNER APG</div> <div>59 S. STATE AVE. Indianapolis, Indiana 46201 PH: (317) 916-4274 FX: (317) 916-4280</div>		
DRAWN BY:	ETC	06/17/2024			
CHECKED BY:	JB	06/17/2024			
FILE NAME:					
HE-CV-070D-04_2D Mechanical.dwg					
TITLE OF DRAWING:					
HE-CV-070D-04					
SHEET:	2	SCALE:	SIZE:	REVISION:	DRAWING NUMBER:
OF	3	1:2	B	0.0	HE-CV-070D-04



PRODUCTS USED ON		Canvas 7D			
DESIGNED BY:	BR	06/17/2024		 59 S. STATE AVE. Indianapolis, Indiana 46201 PH: (317) 916-4274 FX: (317) 916-4280	
DRAWN BY:	ETC	06/17/2024			
CHECKED BY:	JB	06/17/2024			
FILE NAME: HE-CV-070D-04_2D Mechanical.dwg					
TITLE OF DRAWING: HE-CV-070D-04					
SHEET:	3	SCALE:	SIZE:	REVISION:	DRAWING NUMBER:
OF	3	1:1	B	0.0	HE-CV-070D-04