

XL+: How to Backup Program Using Clone Unit

1.	Overview	1
2.	Resources	1
3.	Make Clone	2
4.	Load Clone.....	5
5.	Technical Support Contacts.....	6

1. Overview

'Clone Unit' feature allows the user to "clone" the OCS of the *exact same* model. This feature "clones" application program and unit settings stored in Battery backed RAM of an OCS into the RM (or Removable Media).

This feature can be used for:

- Replacing an OCS by another unit of the same model.
- Duplicating or "clone" units without a PC.

2. Resources

For further information on this controller, please refer to the following documents on our website: www.hornerautomation.com.

Manual Numbers for XL+	
User Manual	MAN1106
Datasheet for Model 0	MAN1107
Datasheet for Model 2	MAN1125
Datasheet for Model 3	MAN1126
Datasheet for Model 4	MAN1127
Datasheet for Model 5	MAN1128
Datasheet for Model 6	MAN1129

3. Make Clone

User needs to perform the following to Clone:

1. The 'Clone Unit' can be accessed by going to the 'System Menu' of the OCS. A new menu 'Clone Unit' has been added at the end of the main 'System Menu' as shown below:

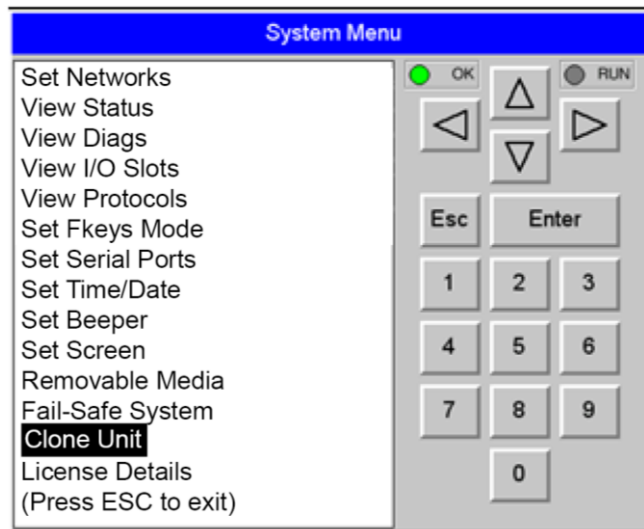


Figure 1 - System Menu

2. Selecting 'Clone Unit' menu will open the following menu screen:

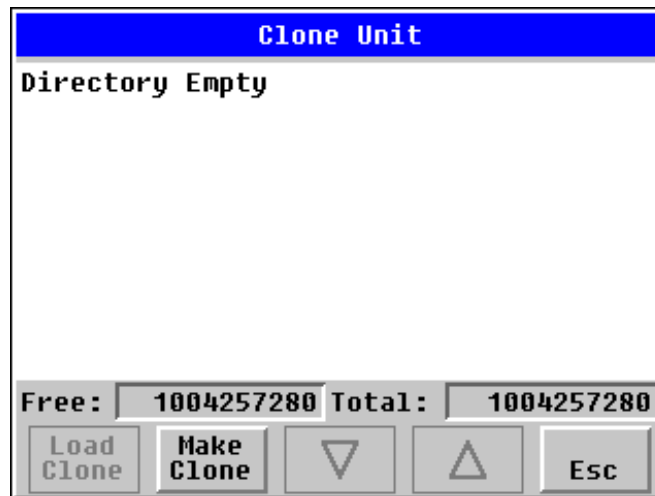


Figure 2 - Clone Unit Menu before Cloning

Free/Total - displays number of free and total bytes in Removable Media.

3. Make/Create Clone option enables user to duplicate / Clone application file, all unit settings and all register values from Battery Backed RAM.

Selecting 'Make Clone' brings up the screen below for the user:

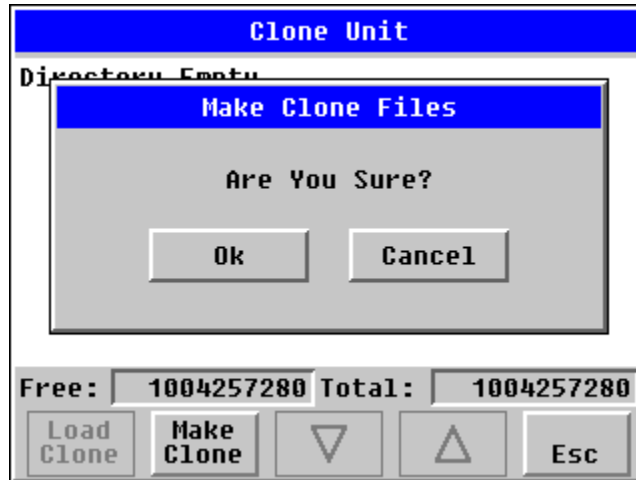


Figure 3 - Clone Unit Confirm Screen

After confirmation, the OCS will create two new files in the root directory of the Removable Media Drive as shown below:

AUTOLOAD.PGM	Application file
CLONE.DAT	File having all unit settings and register values from Battery Backed RAM

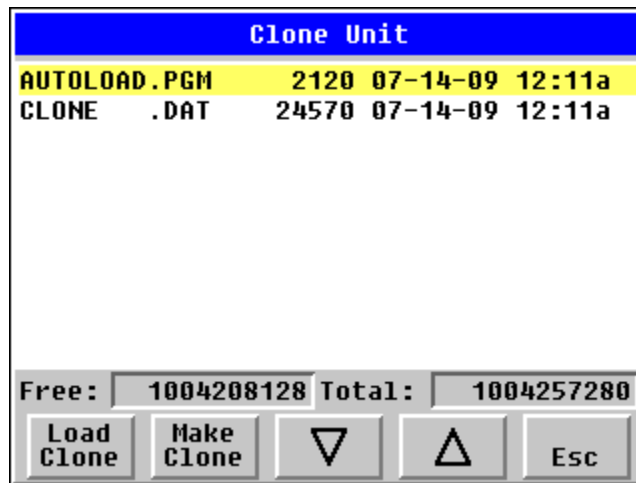


Figure 4 - Clone Unit Files

NOTE: Make/Create clone operation automatically includes the security in \AUTOLOAD.PGM file for security enabled files.

- Once the cloning is successful, the OCS gives a message as below:

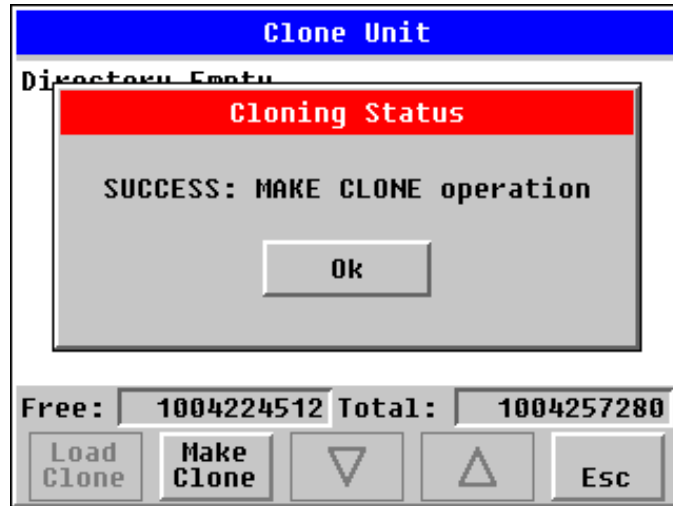


Figure 5 - Cloning Status

Make/Create clone can also be triggered by setting %SR164.9 bit to '1' from Ladder program or graphics. Once the operation is completed, this bit is made zero by the firmware. When Make Clone operation is triggered by this SR bit, it does not ask the user for confirmation for making clone. The success / failure of the operation is also not notified on screen to the user.

In case of failure of 'Make Clone' operation, %SR164.11 bit is set to '1' by the firmware and never reset.

NOTE: Backup of registers in flash memory is not performed by Clone Feature.

4. Load Clone

This option loads the application, all unit settings and register values from Removable Media to the Battery backed RAM (Regardless of AutoLoad settings) and then resets the OCS for the settings to take effect.

User needs to perform the following to 'Load Clone':

1. Select **Clone Unit** from main System Menu of OCS as shown below:

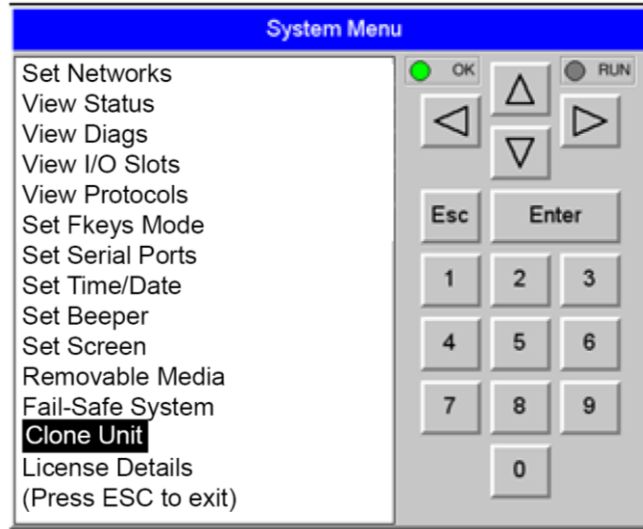


Figure 6 - System Menu

2. Selecting **Clone Unit** menu will open the following menu screen. Select **Load Clone**.

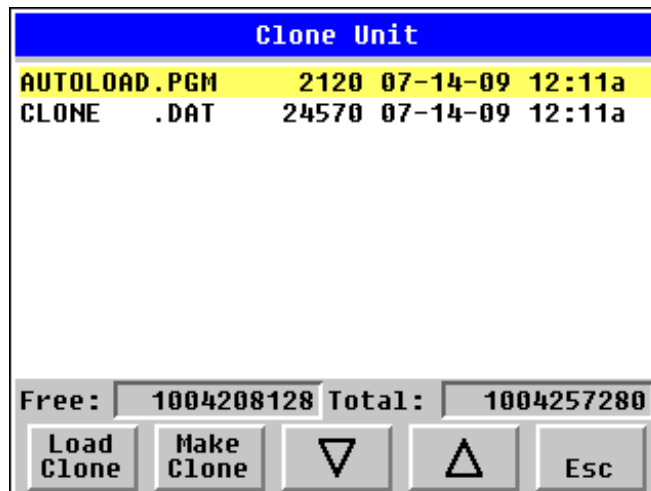


Figure 7 - Clone Unit Menu after Cloning

User needs to confirm Load Clone as shown below:

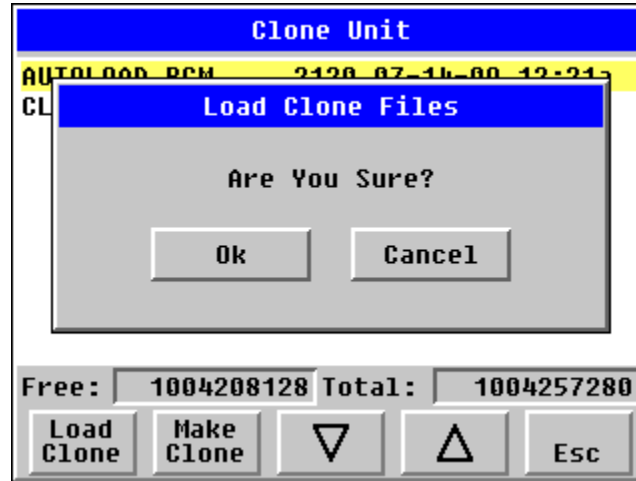


Figure 8 - Load Clone Confirm Screen

3. After confirmation, all unit settings and register values will be loaded from Removable Media to the Battery backed RAM (Regardless of AutoLoad settings) and then OCS resets for the settings to take effect.

NOTE: For security enabled files, 'Load Clone' asks for password validation before loading the application.

Load Clone can also be triggered by setting %SR164.10 bit to '1' from Ladder program or graphics. Once the operation is completed, this bit is made zero by the firmware. When Load Clone operation is triggered by this SR bit, it does not ask the user for confirmation for loading clone. The success / failure of the operation is also not notified on screen to the user.

In case of failure of Load Clone operation, %SR164.12 bit is set to '1' by the firmware and never reset.

5. Technical Support Contacts

North America:

Tel: (317) 916-4274

Fax: (317) 639-4279

Website: <https://hornerautomation.com>

Email: techspt@heapg.com

Europe:

Tel: (+) 353-21-4321-266

Fax: (+353)-21-4321826

Website: www.hornerautomation.eu

Email: technical.support@horner-apg.com