

# XL7 - How to Backup Program Using Clone Unit

1. Overview .....	1
2. Resources .....	1
3. Make Clone .....	2
4. Load Clone.....	5
5. Technical Support Contacts.....	6

## 1. Overview

'Clone Unit' feature allows the user to "clone" the OCS of the *exact same* model. This feature "clones" application program and unit settings stored in Battery backed RAM of an OCS into the RM (or Removable Media).

**This feature can be used for:**

- Replacing an OCS by another unit of the same model.
- Duplicating or "cloning" units without a PC.
- 

## 2. Resources

For further information on this controller, please refer to the following documents on our website: [www.hornerautomation.com](http://www.hornerautomation.com).

Manual Numbers for XL7	
User Manual	MAN0974
Datasheet for Model 0	MAN1161
Datasheet for Model 2	MAN1162
Datasheet for Model 3	MAN1163
Datasheet for Model 4	MAN1164
Datasheet for Model 5	MAN1165
Datasheet for Model 6	MAN1166

### 3. Make Clone

User needs to perform the following to Clone:

1. The 'Clone Unit' can be accessed by going to the 'System Menu' of the OCS. A new menu 'Clone Unit' has been added at the end of the main 'System Menu' as shown below:

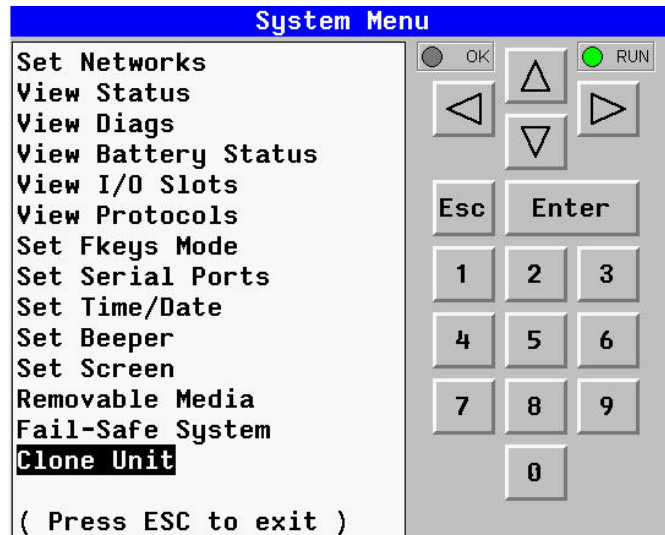


Figure 1 - System Menu

2. Selecting 'Clone Unit' menu will open the following menu screen:

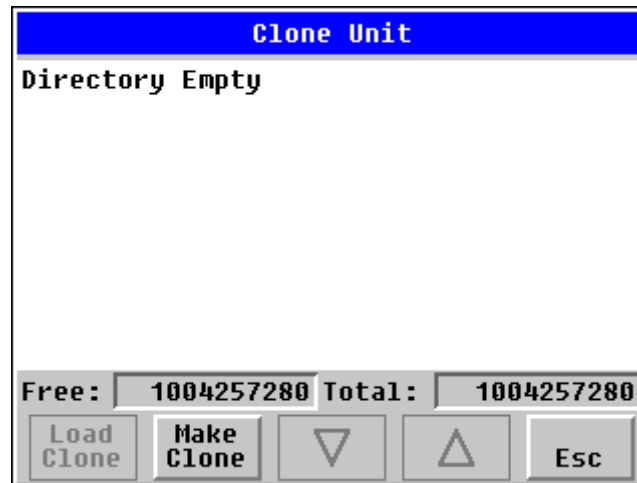


Figure 2 - Clone Unit Menu before Cloning

**Free/Total** - displays number of free and total bytes in Removable Media.

3. Make/Create Clone option enables user to duplicate / Clone application file, all unit settings and all register values from Battery Backed RAM.

Selecting 'Make Clone' brings up the screen below for the user:

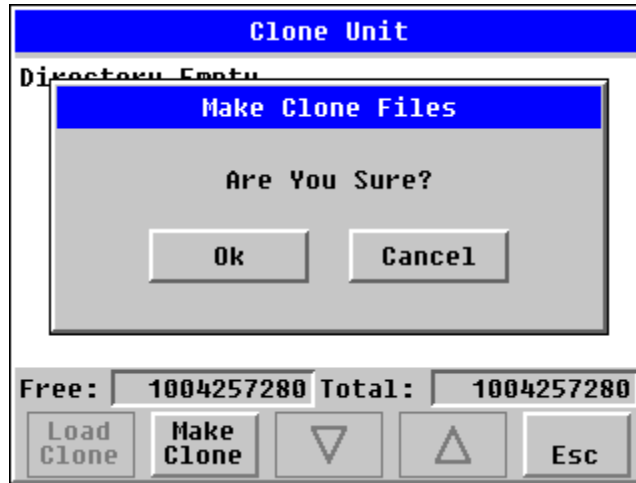


Figure 3 - Clone Unit Confirm Screen

After confirmation, the OCS will create two new files in the root directory of the Removable Media Drive as shown below:

AUTOLOAD.PGM      Application file  
 CLONE.DAT          File having all unit settings and register values from Battery Backed RAM

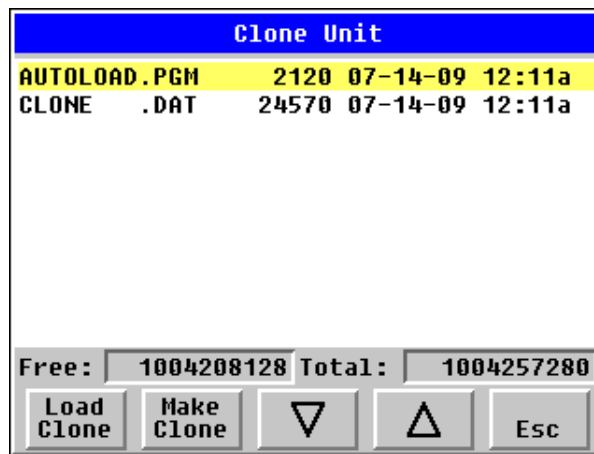


Figure 4 - Clone Unit Files

**NOTE:** Make/Create clone operation automatically includes the security in AUTOLOAD.PGM file for security enabled files.

- Once the cloning is successful, OCS gives a message as below:

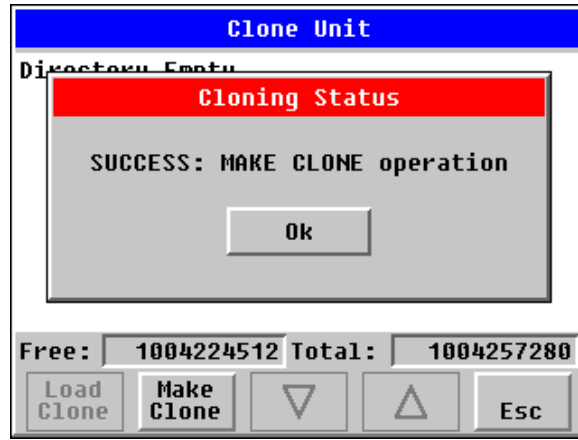


Figure 5 - Cloning Status

Make/Create clone can also be triggered by setting %SR164.9 bit to '1' from Ladder program or graphics. Once the operation is completed, this bit is made zero by the firmware. When Make clone operation is triggered by this SR bit, it does not ask the user for confirmation for making clone. The success / failure of the operation is also not notified on screen to the user.

In case of failure of 'Make Clone' operation, %SR164.11 bit is set to '1' by the firmware and never reset.

**NOTE:** Backup of registers in flash memory is not performed by Clone Feature.

#### 4. Load Clone

This option loads the application, all unit settings and register values from Removable media to the Battery backed RAM (Regardless of AutoLoad settings) and then resets the OCS for the settings to take effect.

User needs to perform the following to 'Load Clone':

1. Select 'Clone Unit' from main 'System Menu' of OCS as shown below:

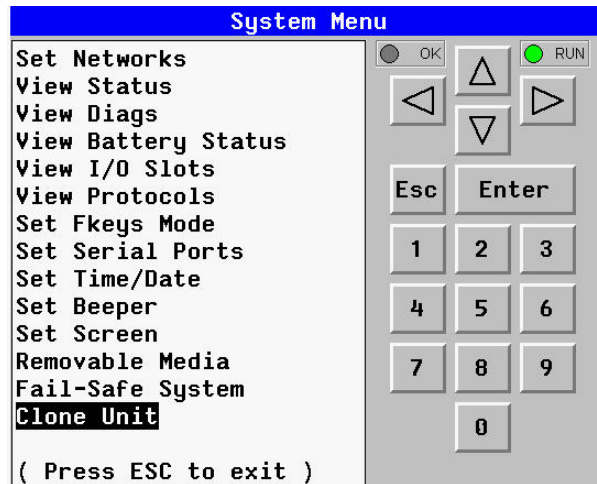


Figure 6 - System Menu

Selecting 'Clone Unit' menu will open the following menu screen. Select 'Load Clone'.

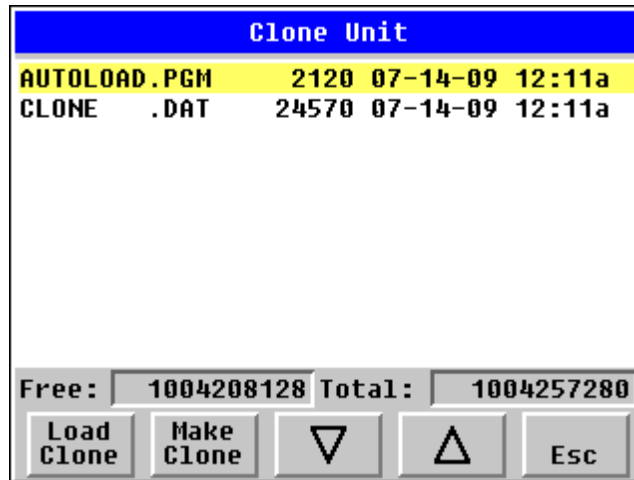


Figure 7 - Clone Unit Menu after Cloning

2. User needs to confirm 'Load Clone' as shown below:

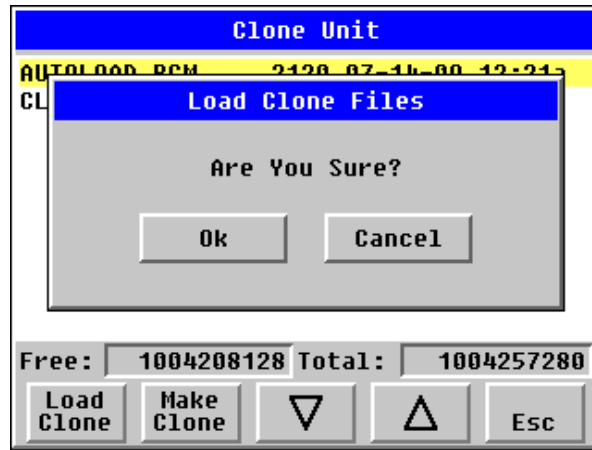


Figure 8 - Load Clone Confirm Screen

3. After confirmation, all unit settings and register values will be loaded from Removable media to the Battery backed RAM (Regardless of AutoLoad settings) and then OCS resets for the settings to take effect.

**NOTE:** For security enabled files, Load clone asks for password validation before loading the application.

Load clone can also be triggered by setting %SR164.10 bit to '1' from Ladder program or graphics. Once the operation is completed, this bit is made zero by the firmware. When Load clone operation is triggered by this SR bit, it does not ask the user for confirmation for loading clone. The success / failure of the operation is also not notified on screen to the user.

In case of failure of 'Load Clone' operation, %SR164.12 bit is set to '1' by the firmware and never reset.

## 5. Technical Support Contacts

### **North America:**

Tel: (317) 916-4274

Fax: (317) 639-4279

Website: <https://hornerautomation.com>

Email: [techspt@heapg.com](mailto:techspt@heapg.com)

### **Europe:**

Tel: (+) 353-21-4321-266

Fax: (+353)-21-4321826

Website: [www.hornerautomation.eu](http://www.hornerautomation.eu)

Email: [technical.support@horner-apg.com](mailto:technical.support@horner-apg.com)